

MONTHLY MEMBERSHIP PROGRESS REPORT

District 325B2

Results as of: 6/30/2020

GMT:

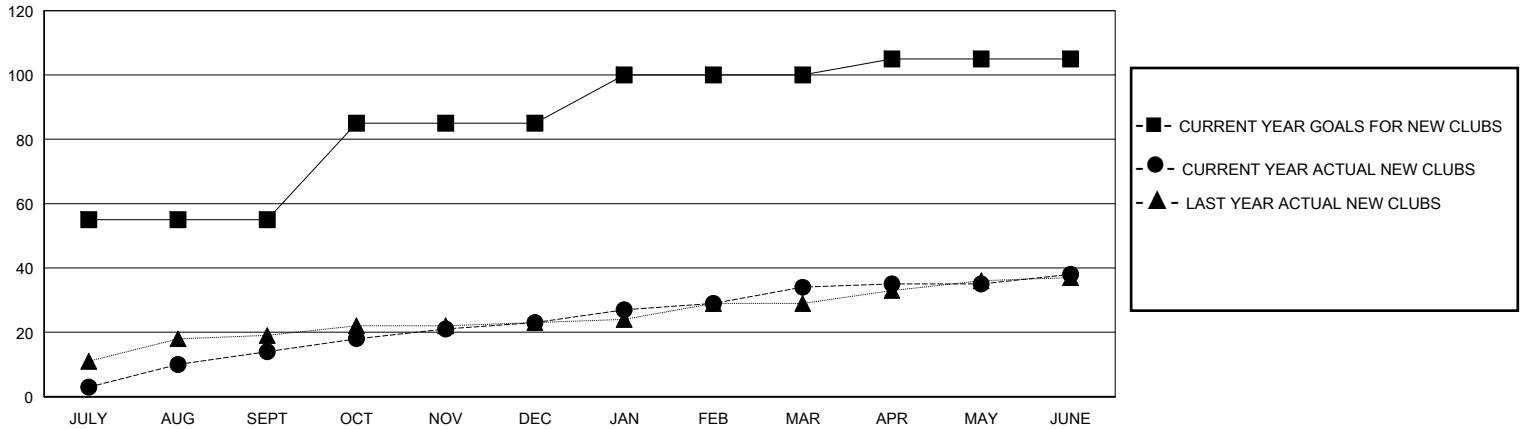
LOCATION NEPAL

GMT CA

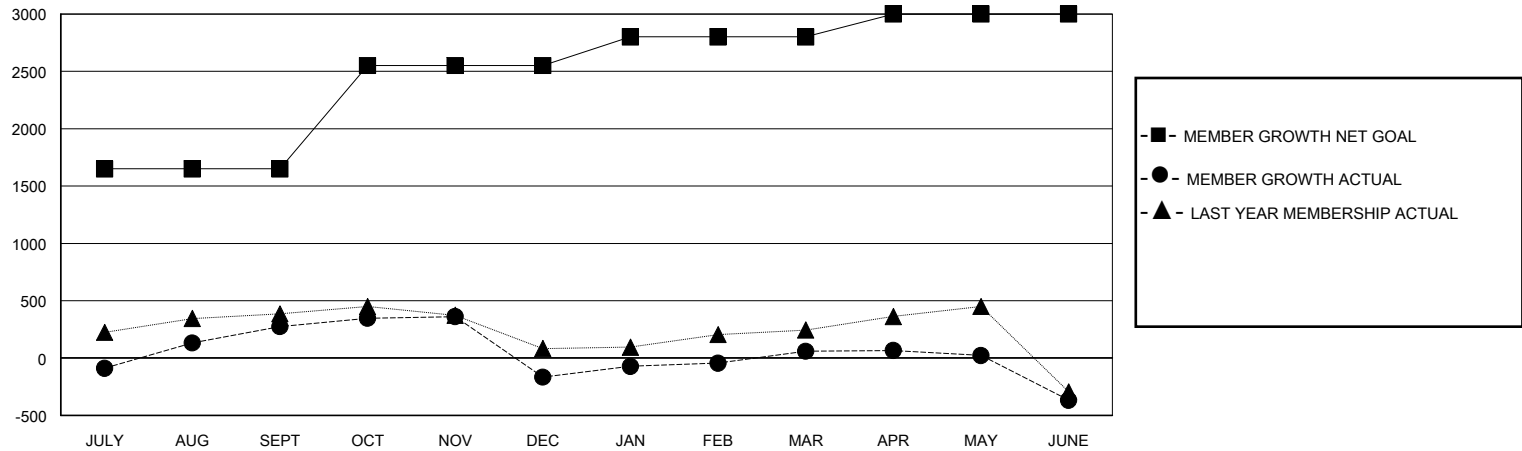
Clubs			
RESULTS FOR 2019-2020			
QUARTER	NEW CLUB GOAL	NEW CLUBS	DROPPED CLUBS
JULY/AUG/SEPT	55	14	3
OCT/NOV/DEC	30	9	19
JAN/FEB/MAR	15	11	2
APR/MAY/JUNE	5	4	0

Members			
RESULTS FOR 2019-2020			
QUARTER	MEMBER GROWTH NET GOAL	MEMBER GROWTH ACTUAL	DROPPED MEMBERS ACTUAL (including transfers)
JULY/AUG/SEPT	1650	540	257
OCT/NOV/DEC	900	307	741
JAN/FEB/MAR	250	370	136
APR/MAY/JUNE	200	188	601

GOALS AND ACTUAL NEW CLUBS CUMULATIVE



GOALS AND ACTUAL MEMBERS CUMULATIVE



DROPPED CLUBS: 24	184 CLUBS OF 407 ADDED 1 OR MORE NEW MEMBERS	GENDER DISTRIBUTION	
		MALE 6,396 (74.64%)	FEMALE 2,173 (25.36%)
DROPPED MEMBERS		CLICK HERE FOR CUMULATIVE MEMBERSHIP DATA	TOTAL FAMILY UNIT MEMBERS 4,992
DECEASED 5	CLUB CANCELLED 364		FAMILY MEMBERS PAYING HALF DUES 3,024
OTHER 1,366	TOTAL 1,735		